

# Development of Salt Pools in Restored Salt Marshes in the Bay of Fundy

## A Case Study

Allison Dykstra<sup>1,2</sup>, Laura Boone<sup>1</sup>, Myriam Barbeau<sup>1</sup> and  
Nic McLellan<sup>2</sup>

<sup>1</sup>Department of Biology, University of New Brunswick

<sup>2</sup>Ducks Unlimited Canada



# Introduction to the project

- Two established salt marshes, two impacted marshes
- Impacted marshes 5 years old (Fall 2010)
  - Two fields with breached dikes in the process of becoming marshes
  - Lower elevation
- Reference marshes ~60 years old
- Interested in pool restoration



# Salt Pools

- Pools that retain water year round
- Initiated by disturbances or erosion
- Very sheltered
- Abundant food
- Important microhabitat in salt marshes
  - Important fish nursery ground
    - Mummichogs have been known to enter a marsh with gut <10% full, leave on average 80% full (Rosa and Odum, 1987).
  - Aquatic invertebrate habitat



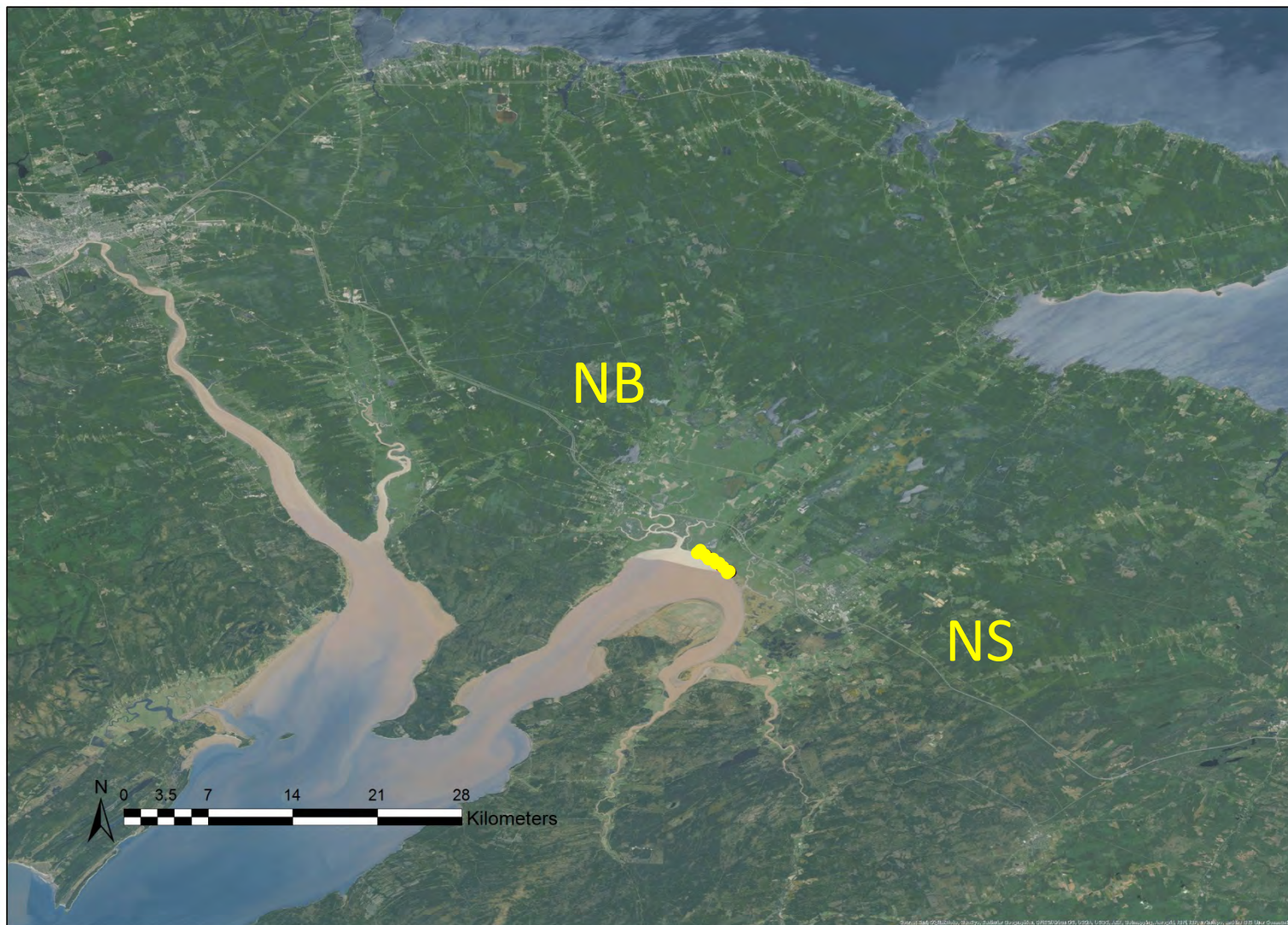
# Research questions

- How do salt pools in a restored marsh compare to those in a reference marsh?
  - Biotically
  - Abiotically
- What features are associated with any differences?
- When might salt pools become fully restored?



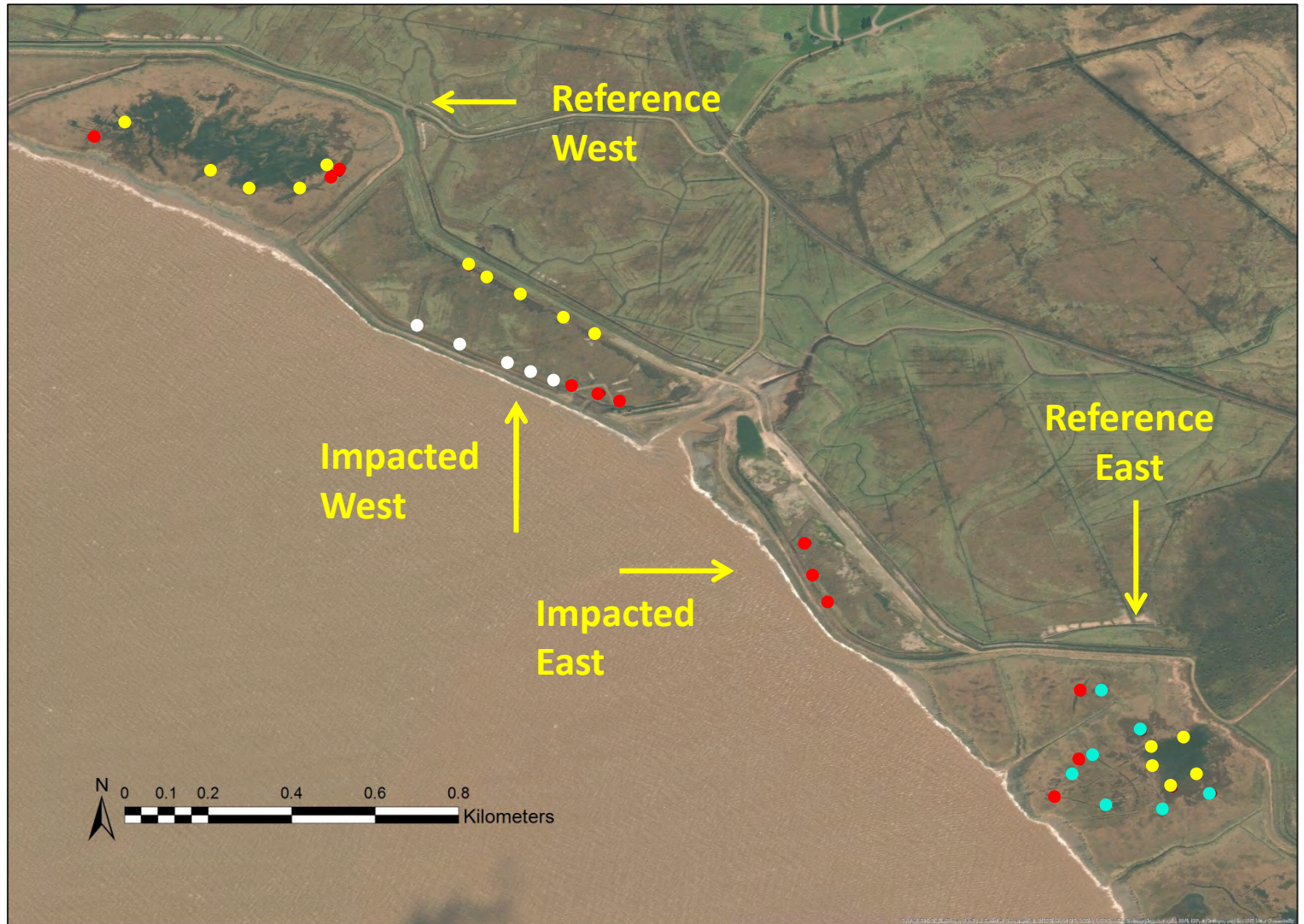


## Aulac Salt Marsh Pool Sample Sites





# Aulac Salt Marsh Pool Sample Sites



# Methods

- Monthly sampling
  - June, July, August
  - 2011-2015
- 1 large pool per site
  - IW, IE, RW, RE
- 3 small pools per site
  - IW, IE, RW, RE
  - 2015 only



Impacted West



Reference East

# Methods

- Abiotic measurements
  - pH
  - DO mg/L (dissolved oxygen)
  - Salinity
  - Temperature
  - Sediment penetrability





# Methods

- Biotic measurements
  - Minnow traps
  - Invertebrate activity traps



# Results-Abiotics

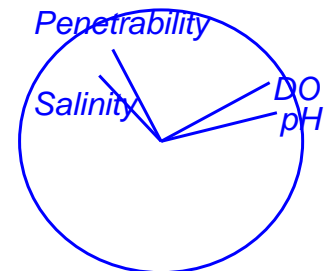
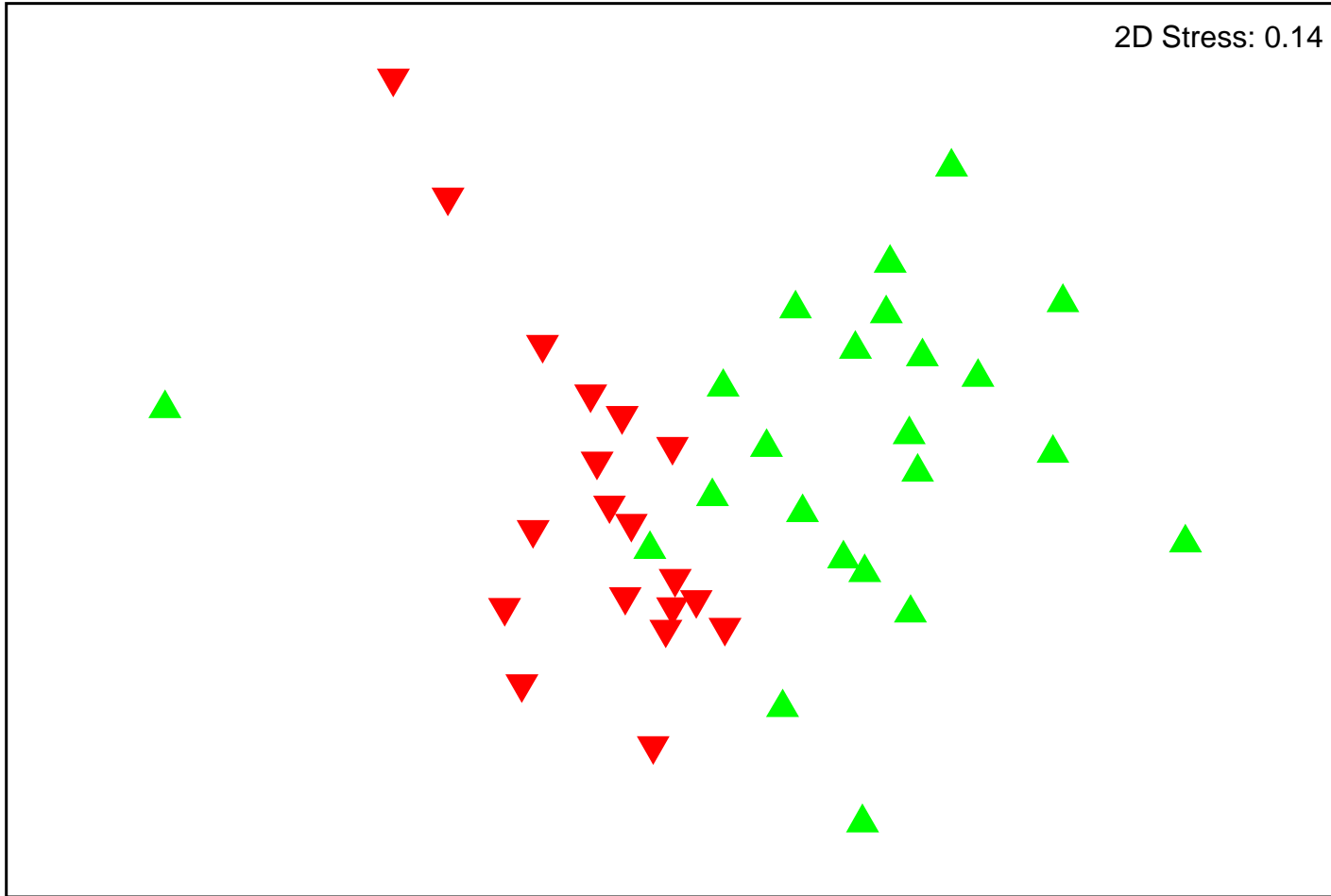
Normalise  
Resemblance: D1 Euclidean distance

2D Stress: 0.14

*Site Type*

▲ Reference

▼ Impacted



Symbol = Average per site for a given month

# Results-Abiotics

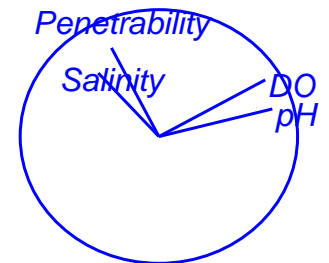
Normalise

Resemblance: D1 Euclidean distance

2D Stress: 0.14

*Year Site Type*

- ▲ 2011 Reference
- ▲ 2011 Impacted
- 2012 Reference
- 2012 Impacted
- 2013 Reference
- 2013 Impacted
- ◆ 2015 Reference
- ◆ 2015 Impacted



Symbol = Average per site for a given month



# Results-Abiotics

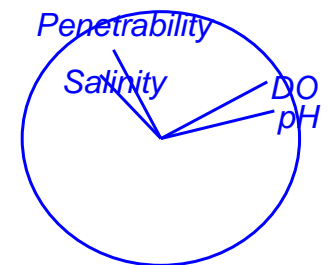
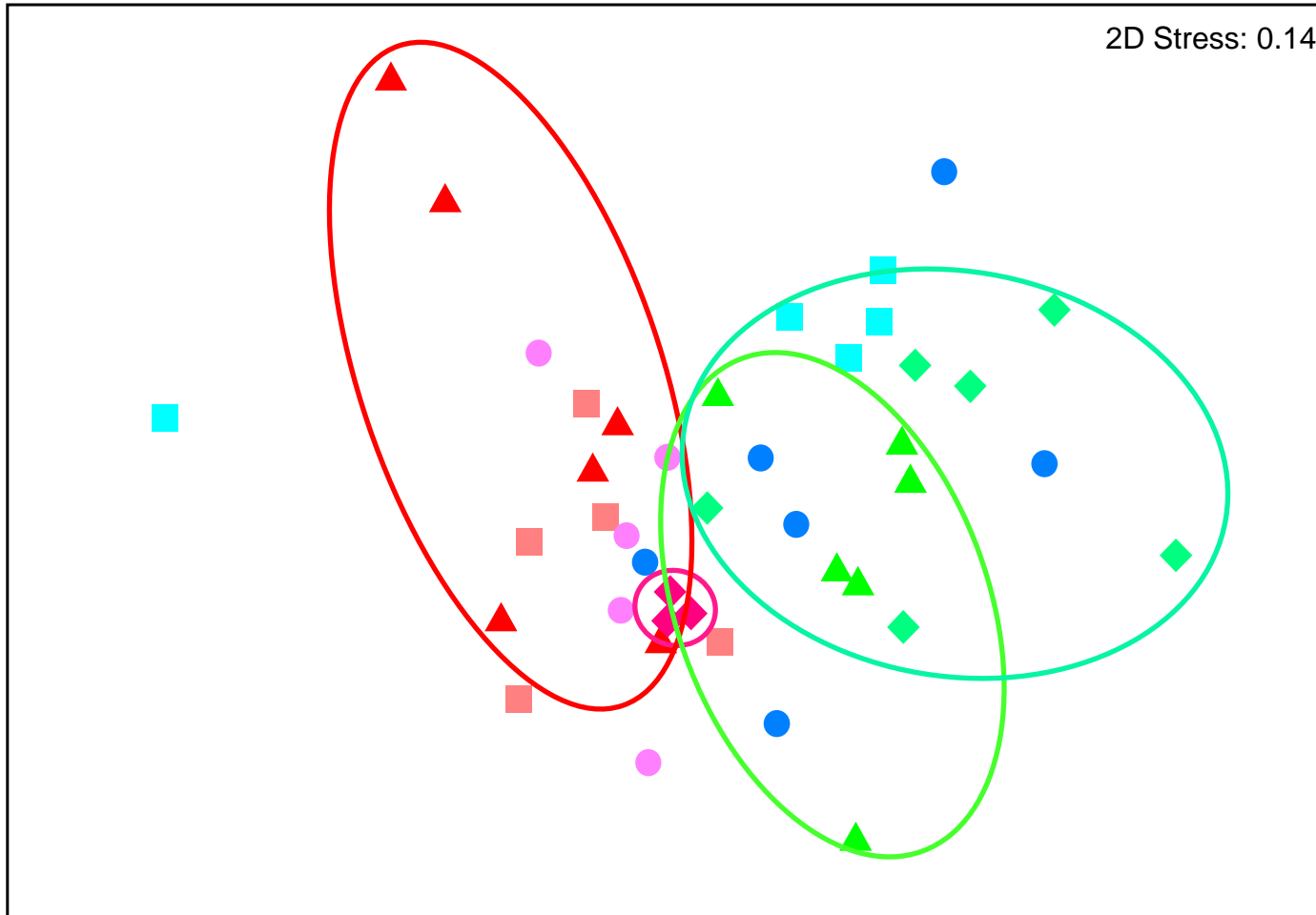
Normalise

Resemblance: D1 Euclidean distance

2D Stress: 0.14

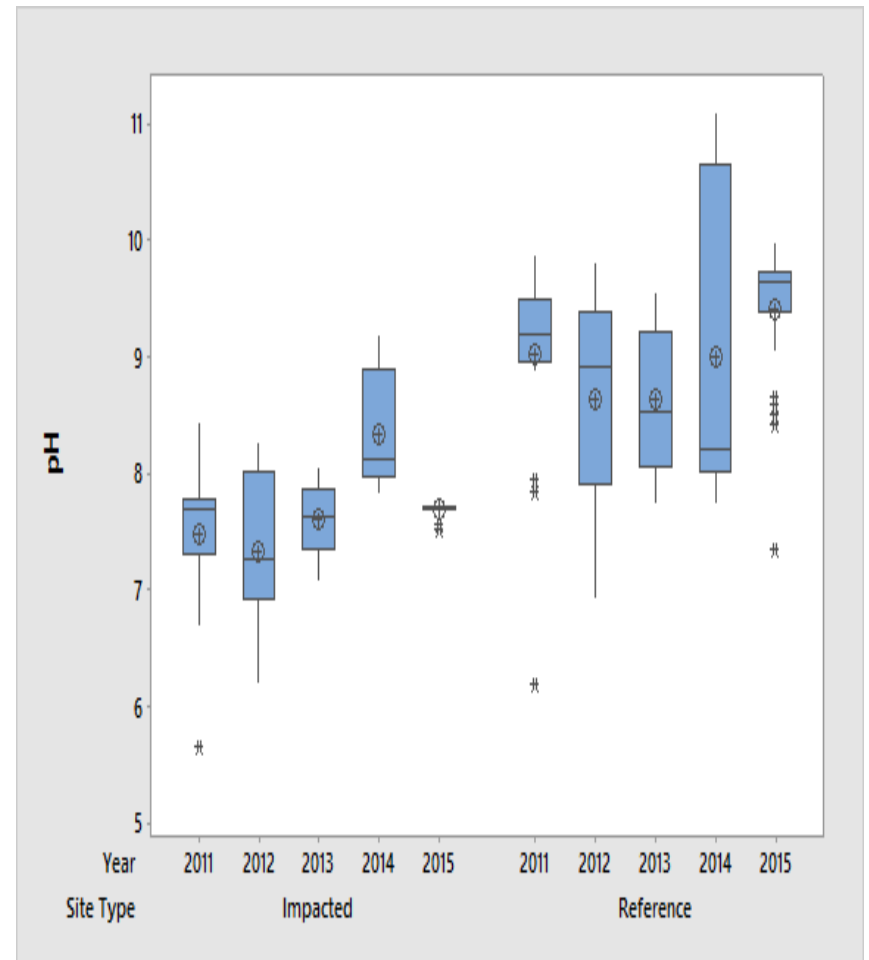
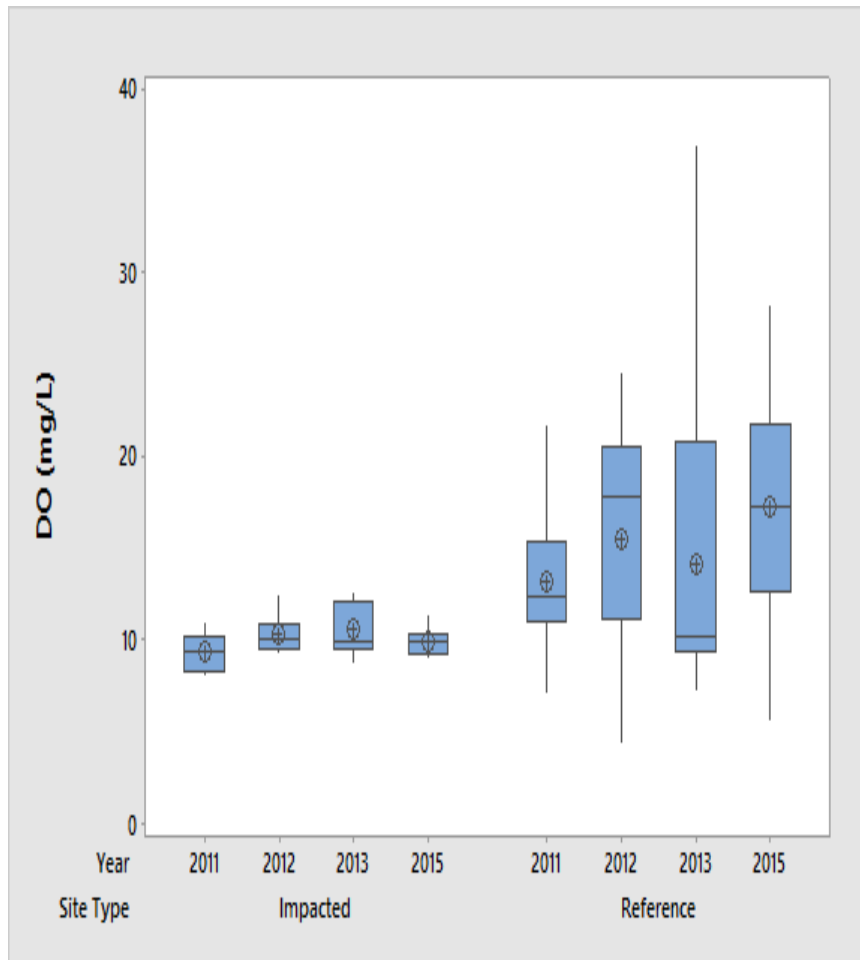
*Year Site Type*

- ▲ 2011 Reference
- ▲ 2011 Impacted
- 2012 Reference
- 2012 Impacted
- 2013 Reference
- 2013 Impacted
- ◆ 2015 Reference
- ◆ 2015 Impacted



Symbol = Average per site for a given month

# Results-Abiotics



# Results- Minnow

## Traps

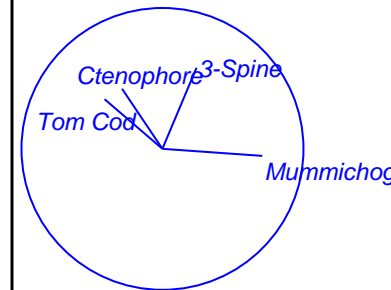
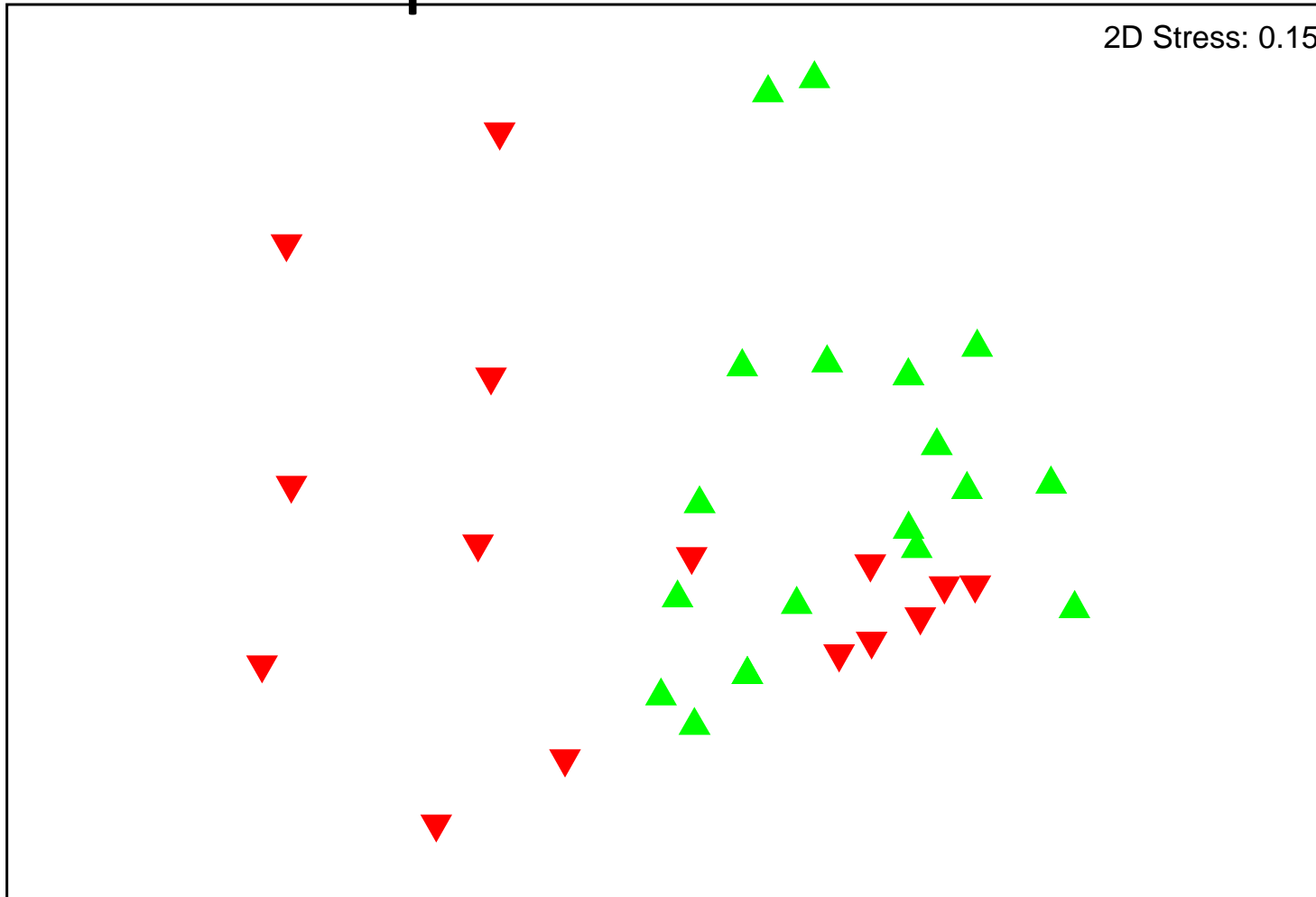
Resemblance: S17 Bray Curtis similarity (+d)

2D Stress: 0.15

*SiteType*

▲ Reference

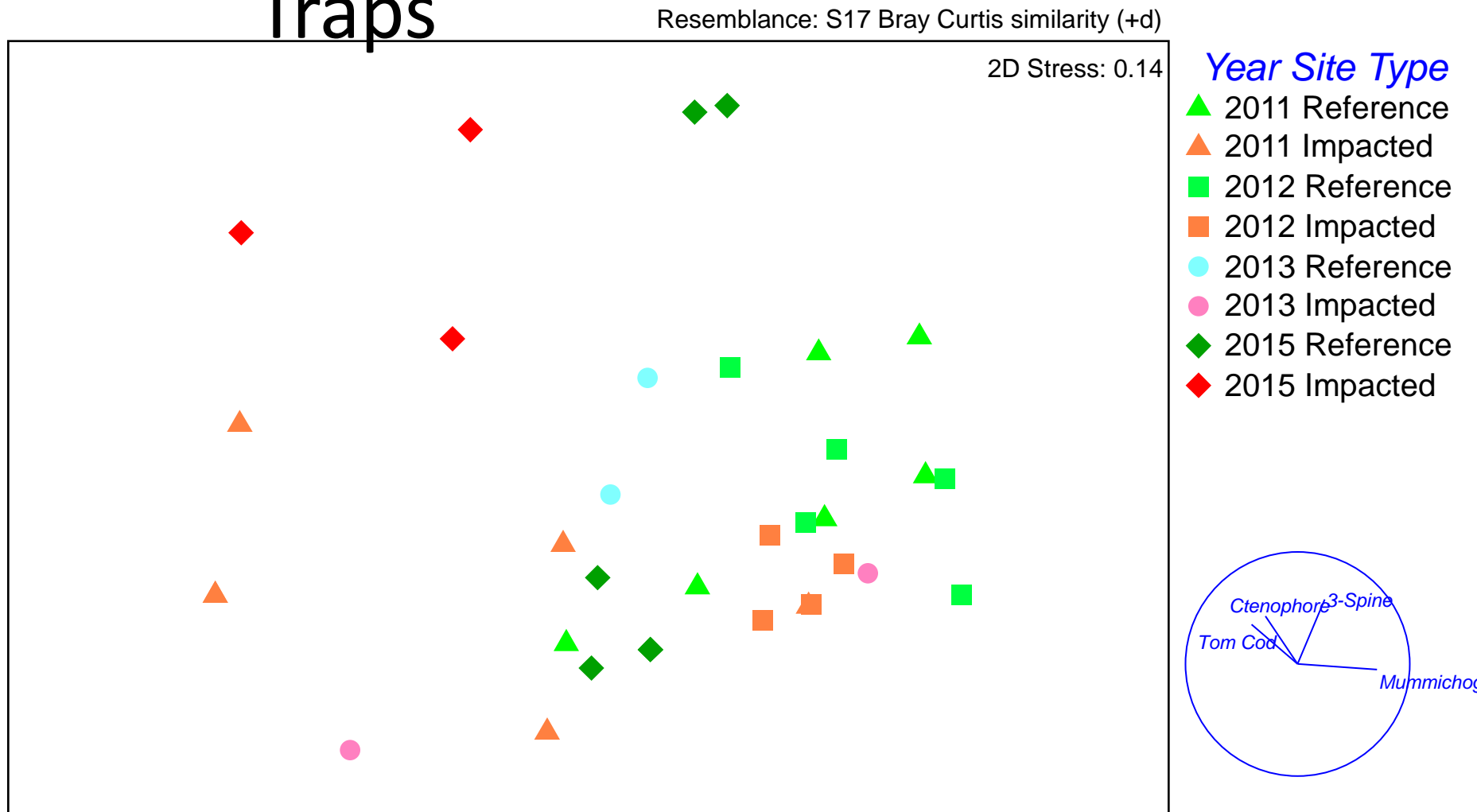
▼ Impacted





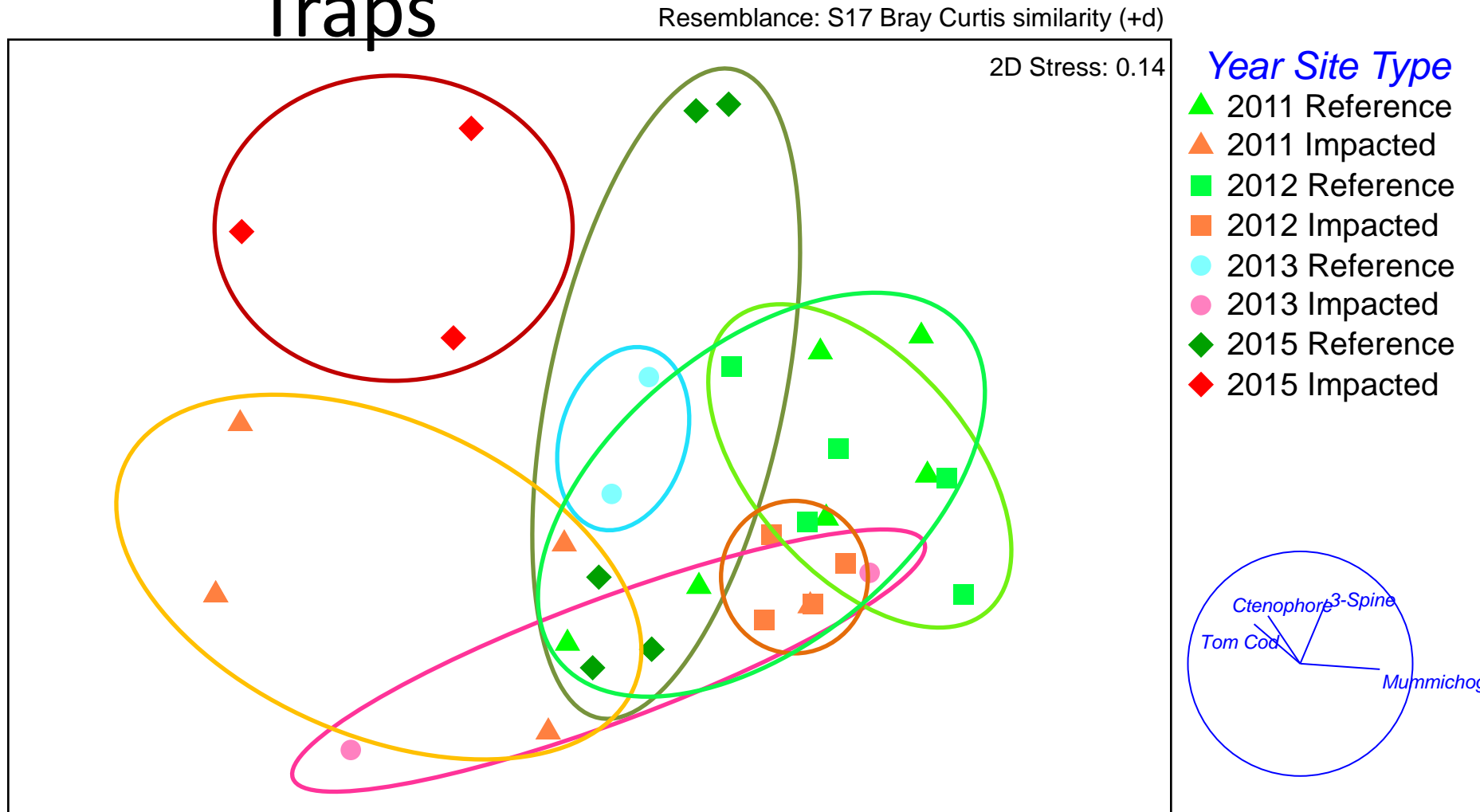
# Results- Minnow

## Traps



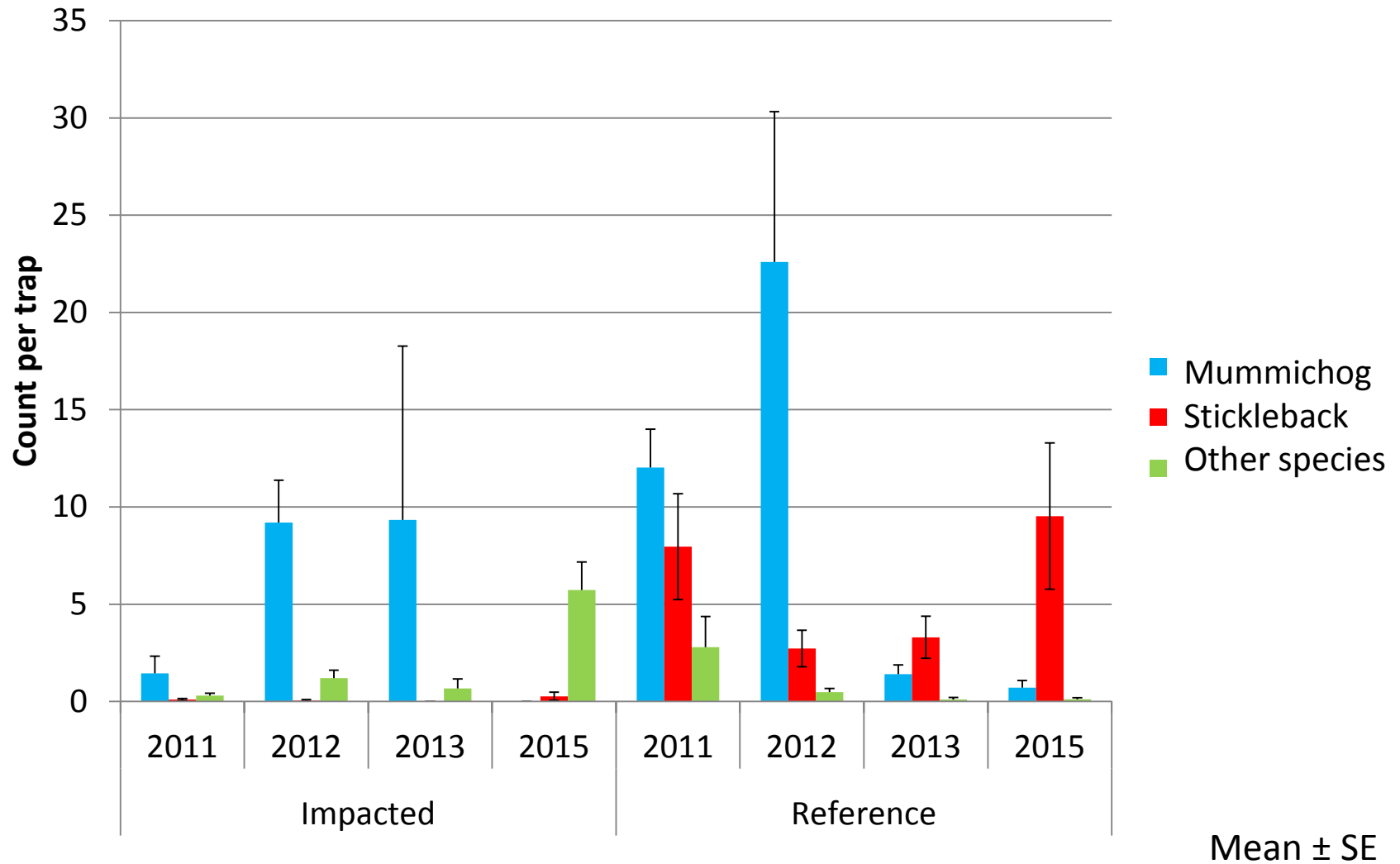
# Results- Minnow

## Traps



Symbol = Average per site for a given month

# Results- Minnow Traps





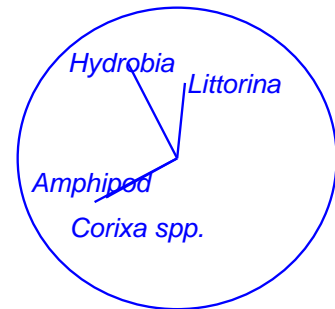
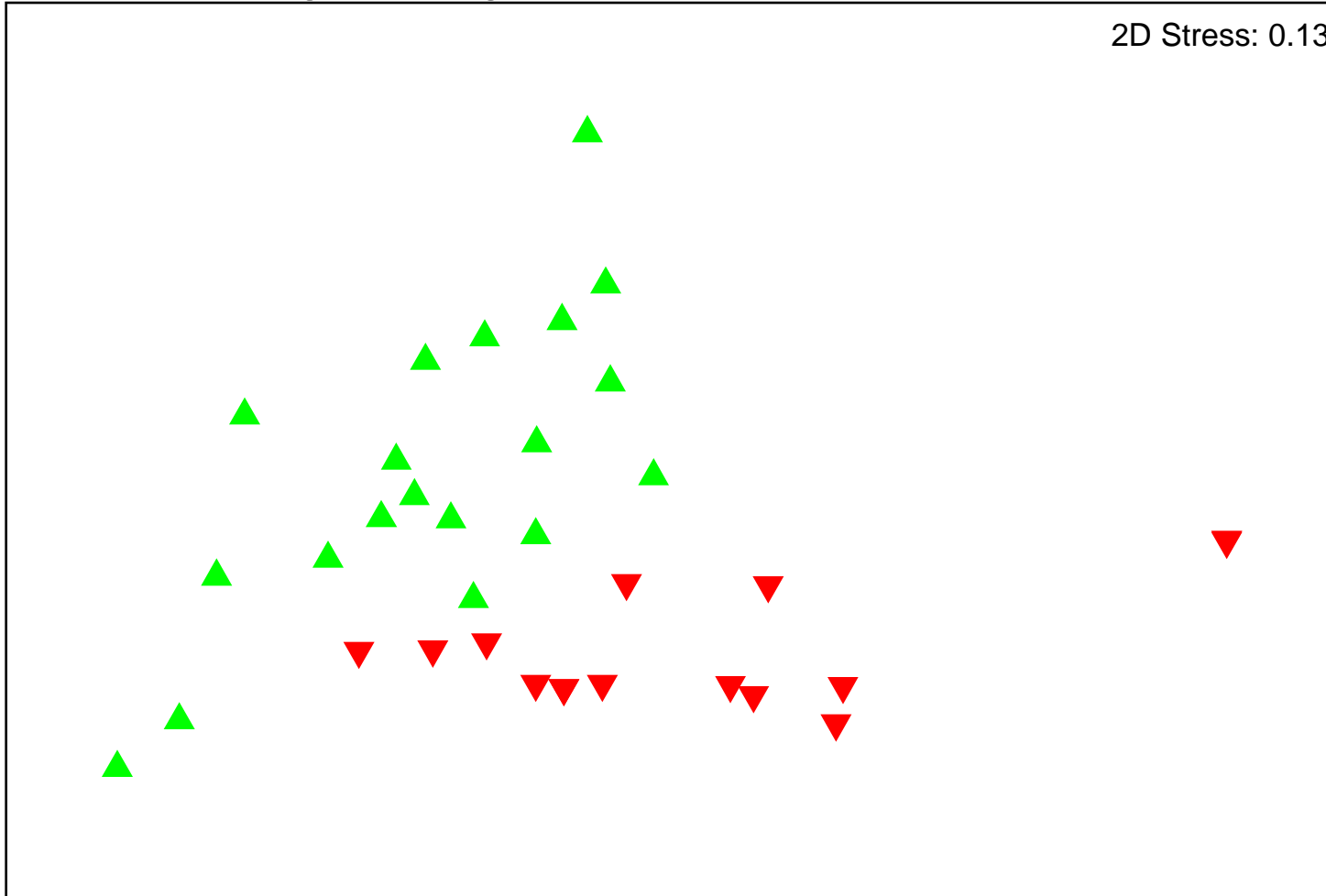
# Results- Invertebrate Activity Traps

Resemblance: S17 Bray Curtis similarity (+d)

2D Stress: 0.13

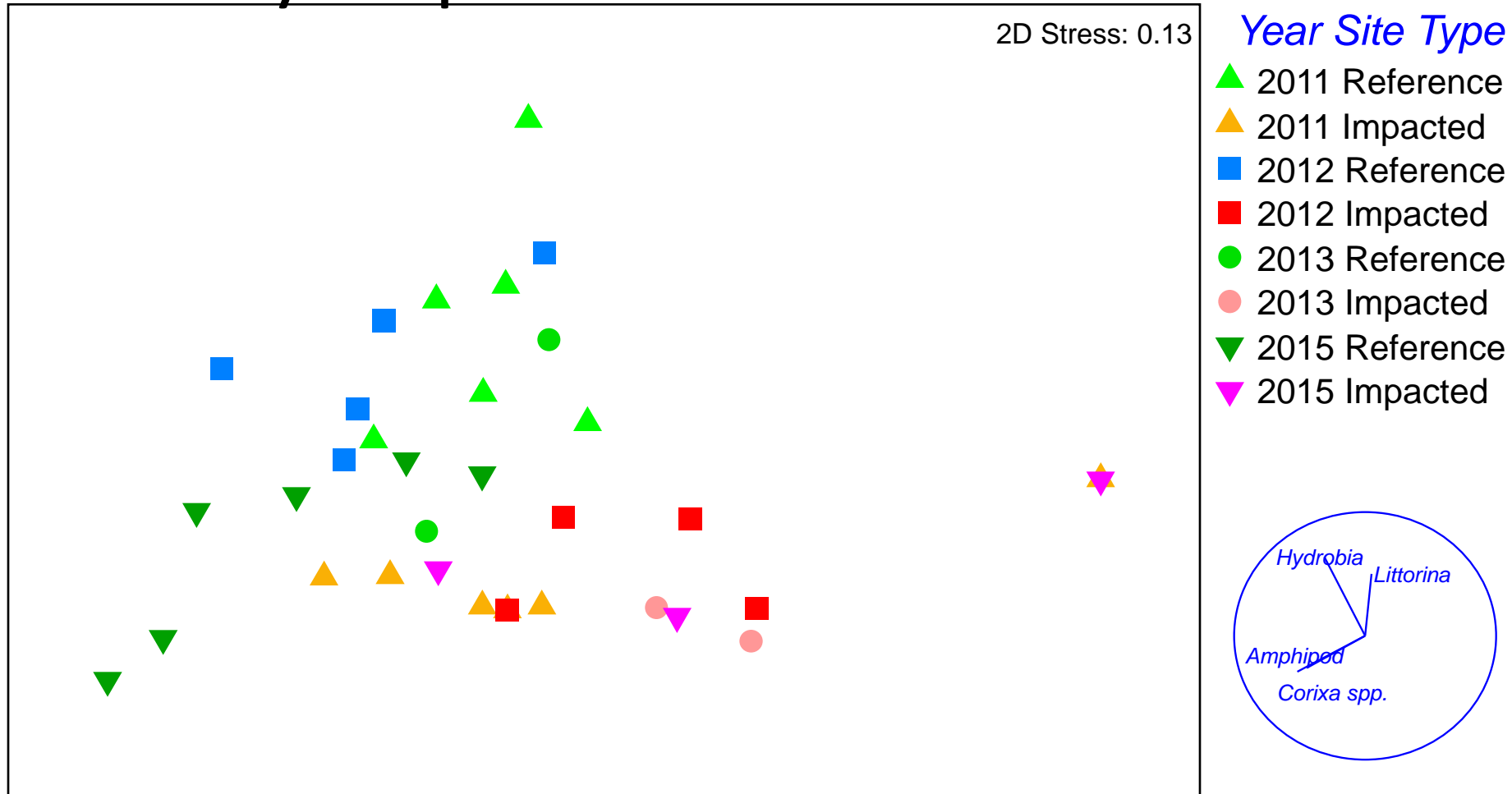
*Site Type*

- ▲ Reference
- ▼ Impacted



# Results- Invertebrate Activity Traps

Resemblance: S17 Bray Curtis similarity (+d)

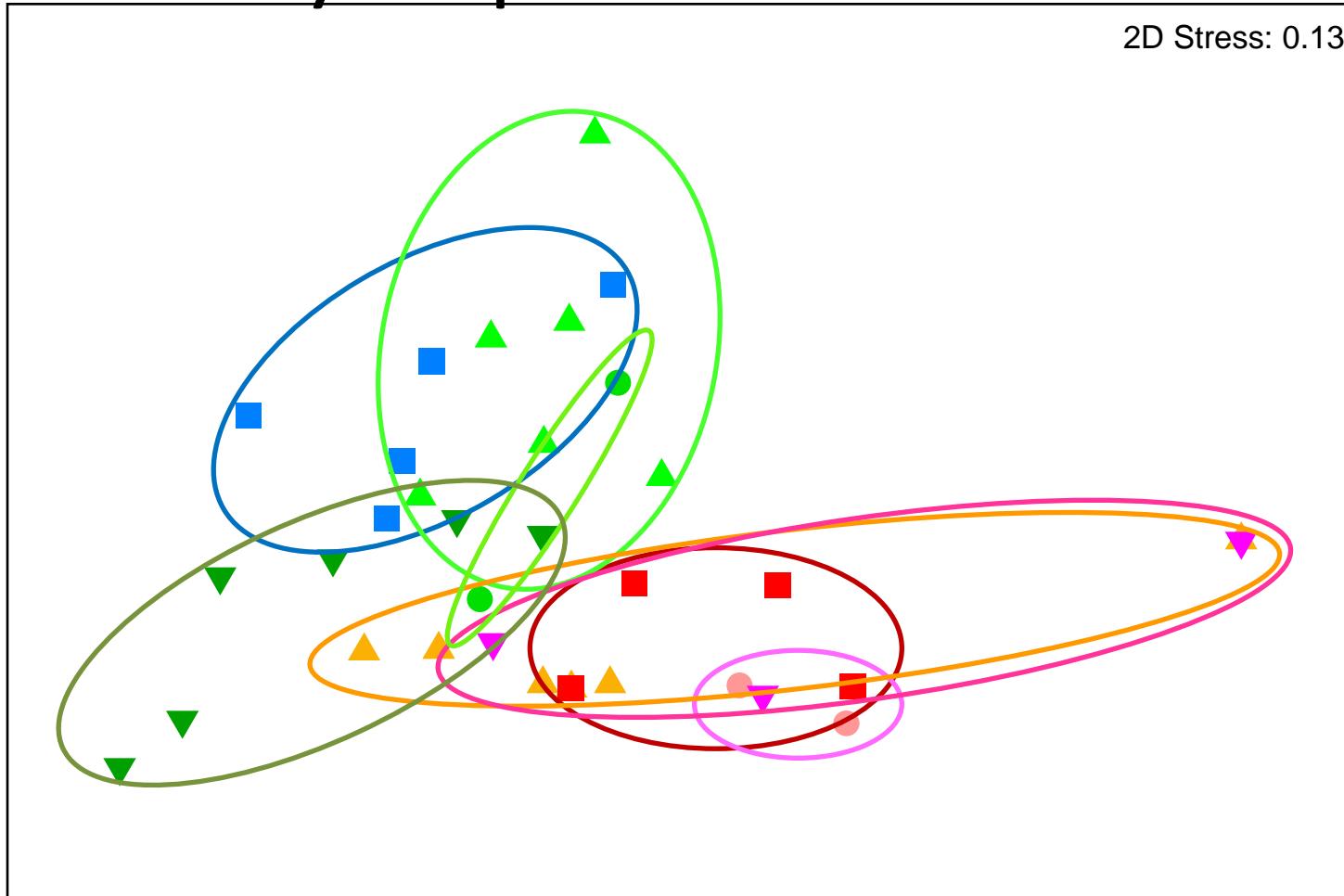


Symbol = Average per site for a given month

# Results- Invertebrate Activity Traps

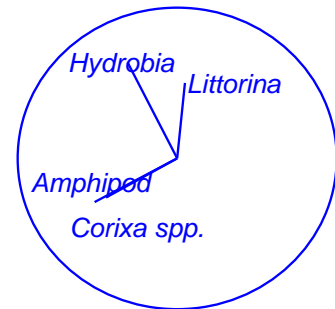
Resemblance: S17 Bray Curtis similarity (+d)

2D Stress: 0.13



*Year Site Type*

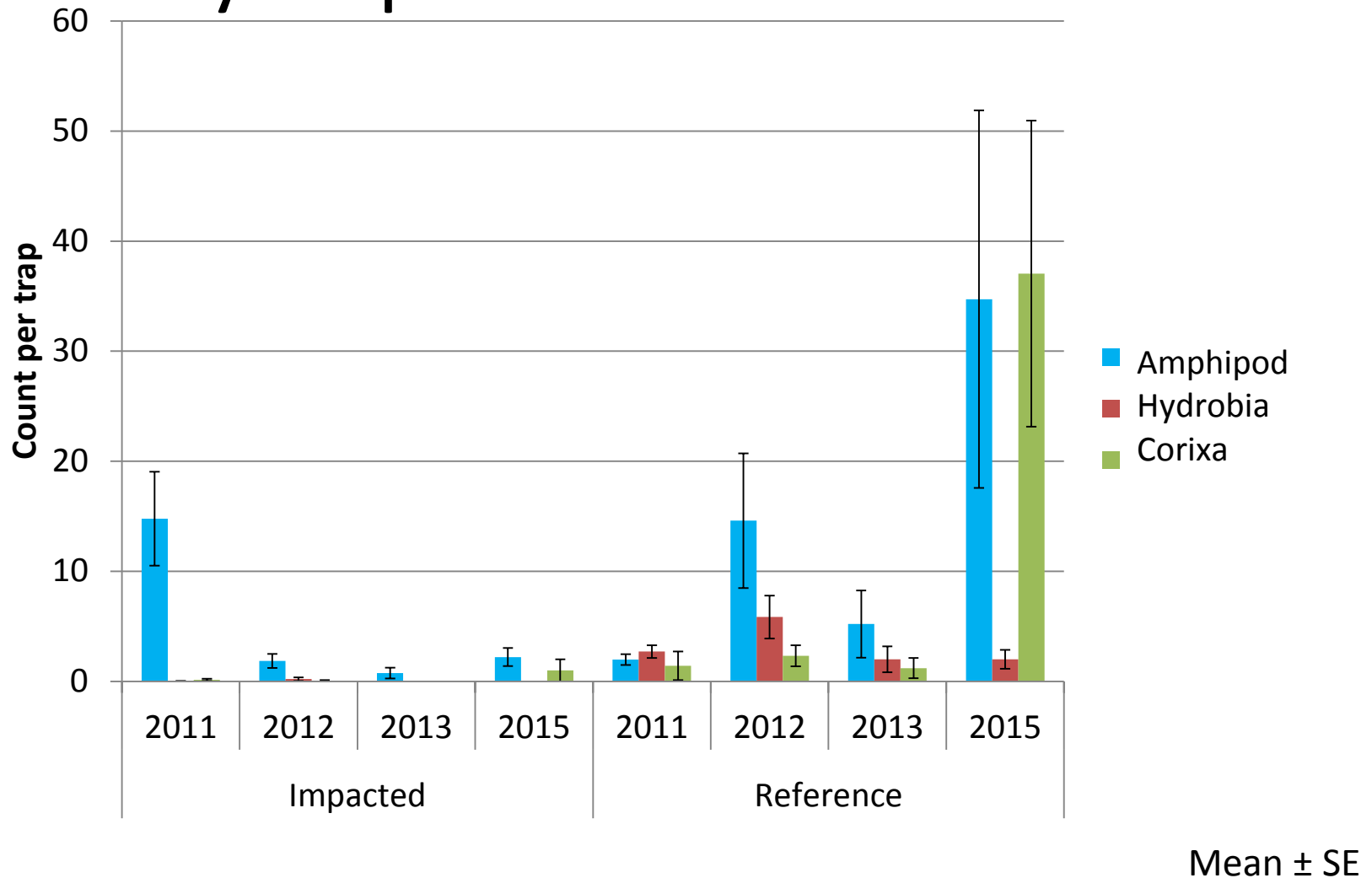
- ▲ 2011 Reference
- ▲ 2011 Impacted
- 2012 Reference
- 2012 Impacted
- 2013 Reference
- 2013 Impacted
- ▼ 2015 Reference
- ▼ 2015 Impacted



Symbol = Average per site for a given month



# Results- Invertebrate Activity Traps



# Conclusions

- Are we approaching the reference condition?
  - Abiotics of large pools still significantly different
  - Minnow traps significantly different in 2015, but not in 2012 and 2013
  - Activity traps not significantly different since 2013
- Aspects to watch
  - Large pool minnow traps
  - Appearance of algae and plants in impacted pools



# Questions?

## Acknowledgments:

Allen Beck  
Spencer Virgin  
Conner Sceviour  
Meagan Hicks  
Jeff Ollerhead  
Brian Sergeant

Isaac Thomas  
Lionel Hayter  
Dylan Schneider  
Kelsey Mann  
Cody Alderson  
Rachel Bood  
Wade Lewis

## Funding :



Ducks Unlimited Canada  
Conserving Canada's Wetlands



Service  
Canada



Fisheries and Oceans  
Canada

# Results

## Small Pool Abiotics

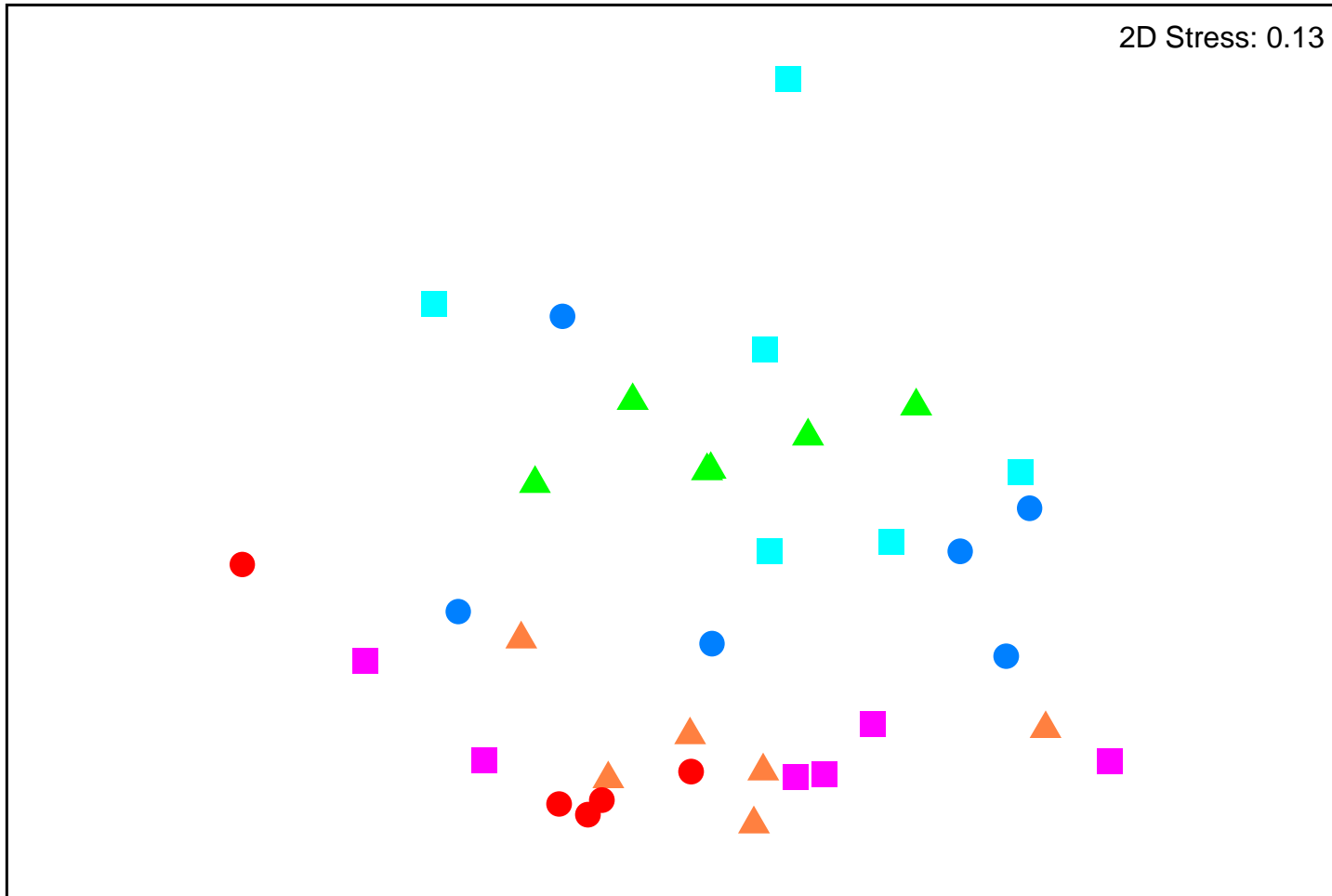
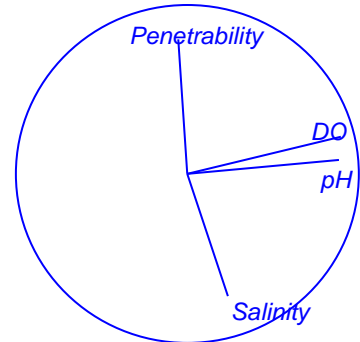
Normalise

Resemblance: D1 Euclidean distance

2D Stress: 0.13

*SiteType Month*

- ▲ June Reference
- ▲ June Impacted
- July Reference
- July Impacted
- August Reference
- August Impacted



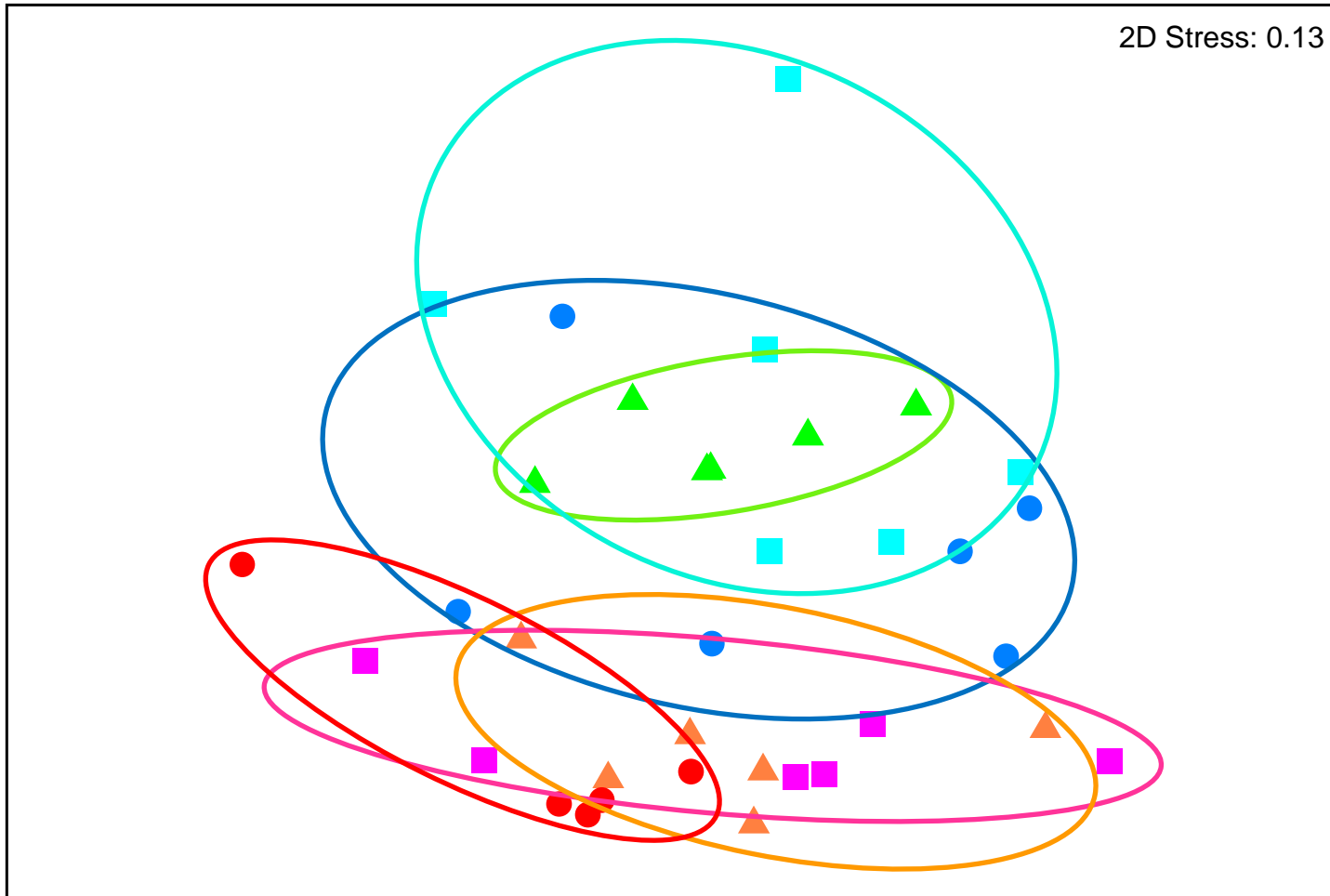
# Results

## Small Pool Abiotics

Normalise

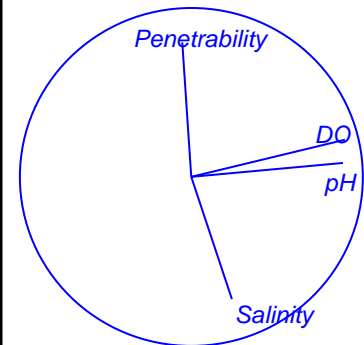
Resemblance: D1 Euclidean distance

2D Stress: 0.13



*SiteType Month*

- ▲ June Reference
- ▲ June Impacted
- July Reference
- July Impacted
- August Reference
- August Impacted





# Results

## Small Pool Biotia-2015

Transform: Presence/absence

Resemblance: S17 Bray Curtis similarity (+d)

2D Stress: 0.01

*Month SiteType*

- ▲ June Reference
- ▼ June Impacted
- July Impacted
- ◆ August Reference
- August Impacted



# Results

## Small Pools Biota- 2015

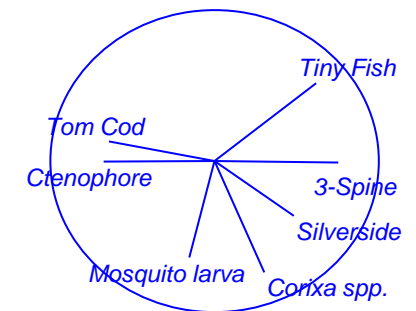
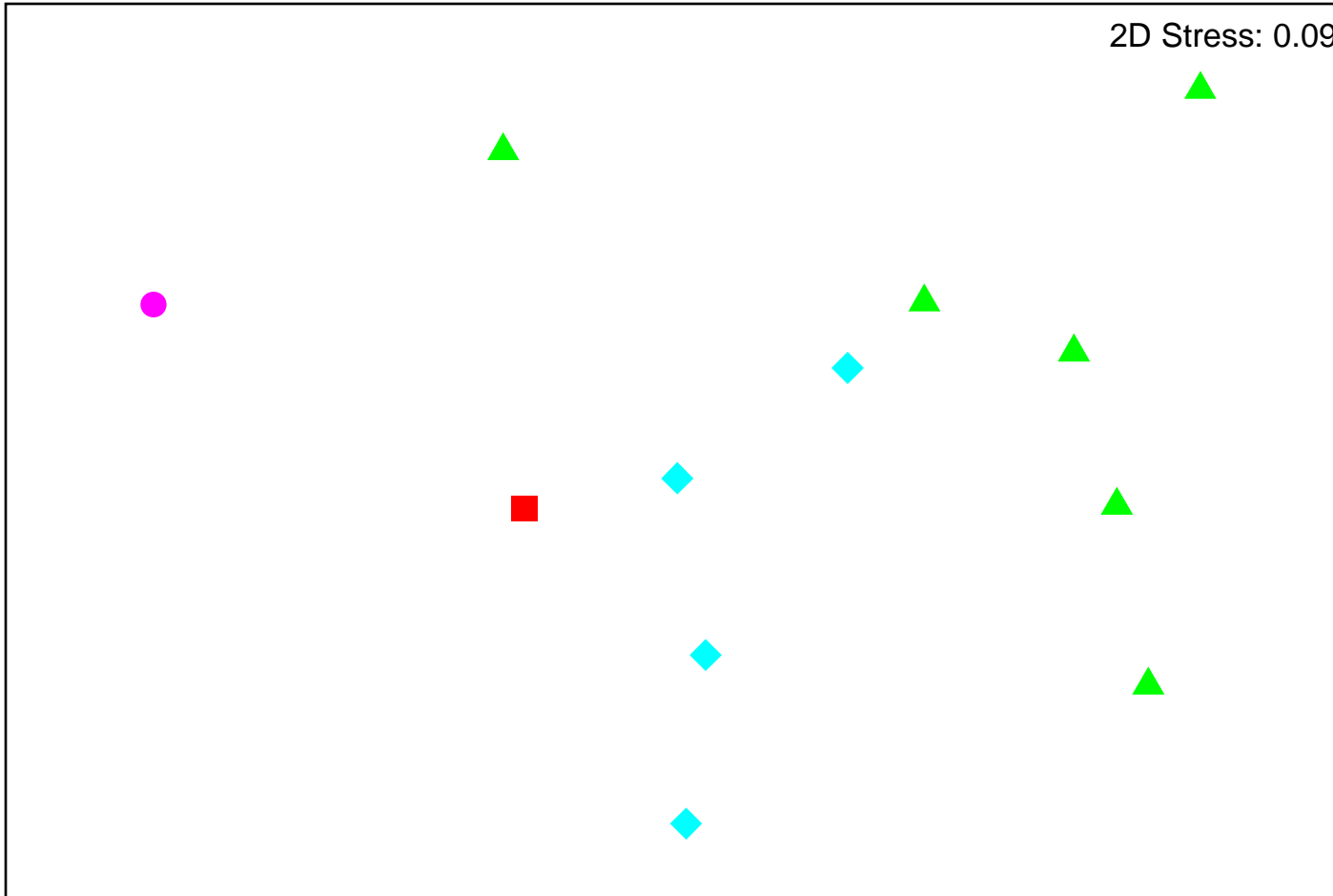
Transform: Presence/absence

Resemblance: S17 Bray Curtis similarity (+d)

2D Stress: 0.09

*Month Site Type*

- ▲ June Reference
- July Impacted
- ◆ August Reference
- August Impacted



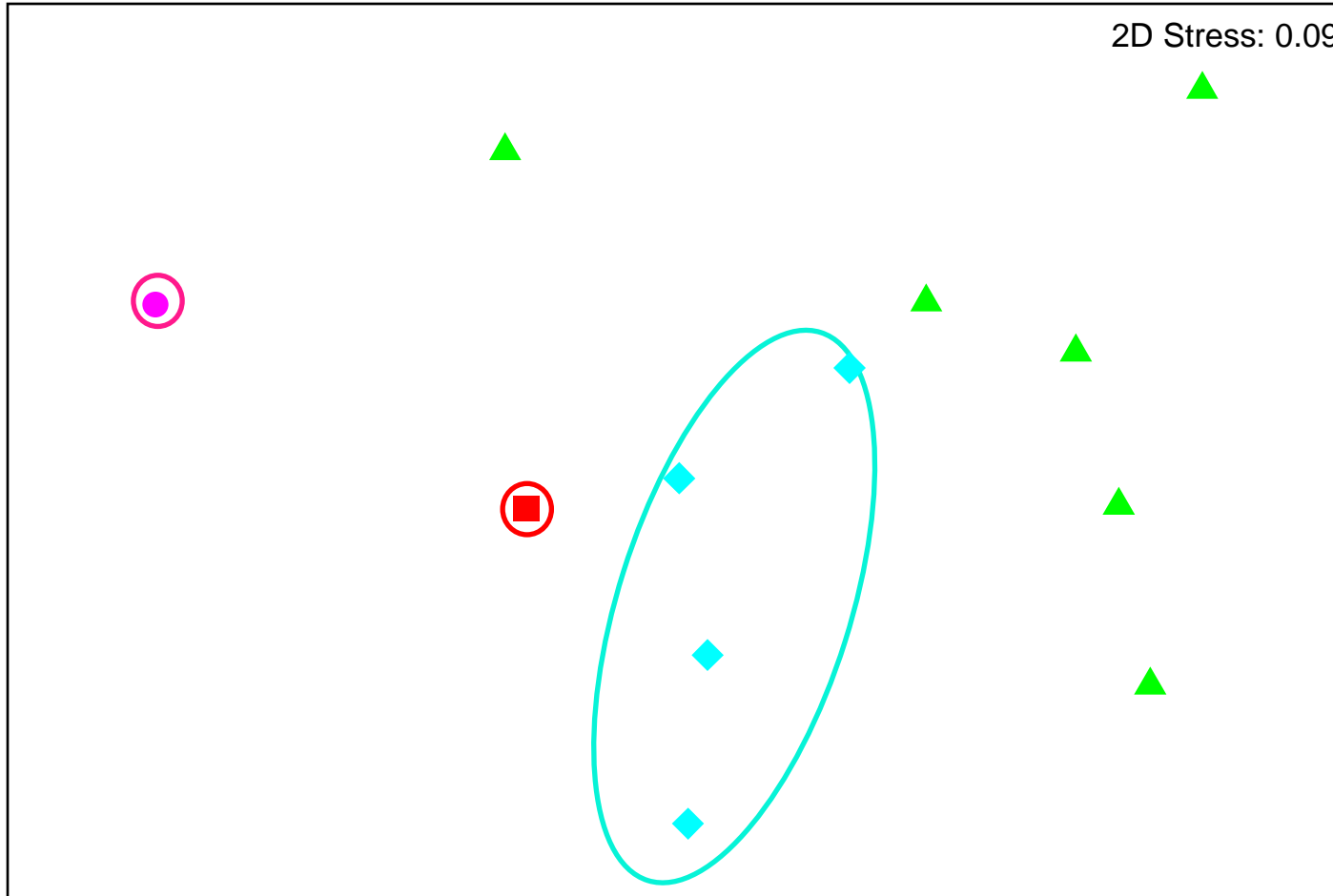
# Results

## Small Pools Biota- 2015

Transform: Presence/absence

Resemblance: S17 Bray Curtis similarity (+d)

2D Stress: 0.09



*Month SiteType*

- ▲ June Reference
- July Impacted
- ◆ August Reference
- August Impacted

